



**Making  
the most of  
your money**

# **A budget to serve the people of Hampshire**

**Your 2024-25 Council Tax from  
Hampshire County Council**



**Hampshire**  
County Council



**I am incredibly proud of Hampshire's local services. We have some of the best in the country, and we are committed to maintaining the county as a great place for people to live, learn, work, play, visit and do business, so that everyone can continue to enjoy all it has to offer now and into the future.**

Setting a responsible, balanced budget for the year ahead is one of our key responsibilities at Hampshire County Council – ensuring we make the most of your money to deliver important local services to our 1.4 million residents.

However, these are challenging times for everyone as we look for ways to stretch the budgets that we have available. With more and more very vulnerable children and adults who need our help and inflation pushing up our

costs, it keeps getting harder to balance the books. This is a national problem impacting many local councils, so we must continue to do all we can to manage Hampshire's budget with the greatest care, so that it benefits the most residents.

To be able to keep serving the people of Hampshire and help towards meeting growing demand for some services like social care, our portion of the Council Tax bill must increase by 4.99% from 1 April 2024, of which 2% will

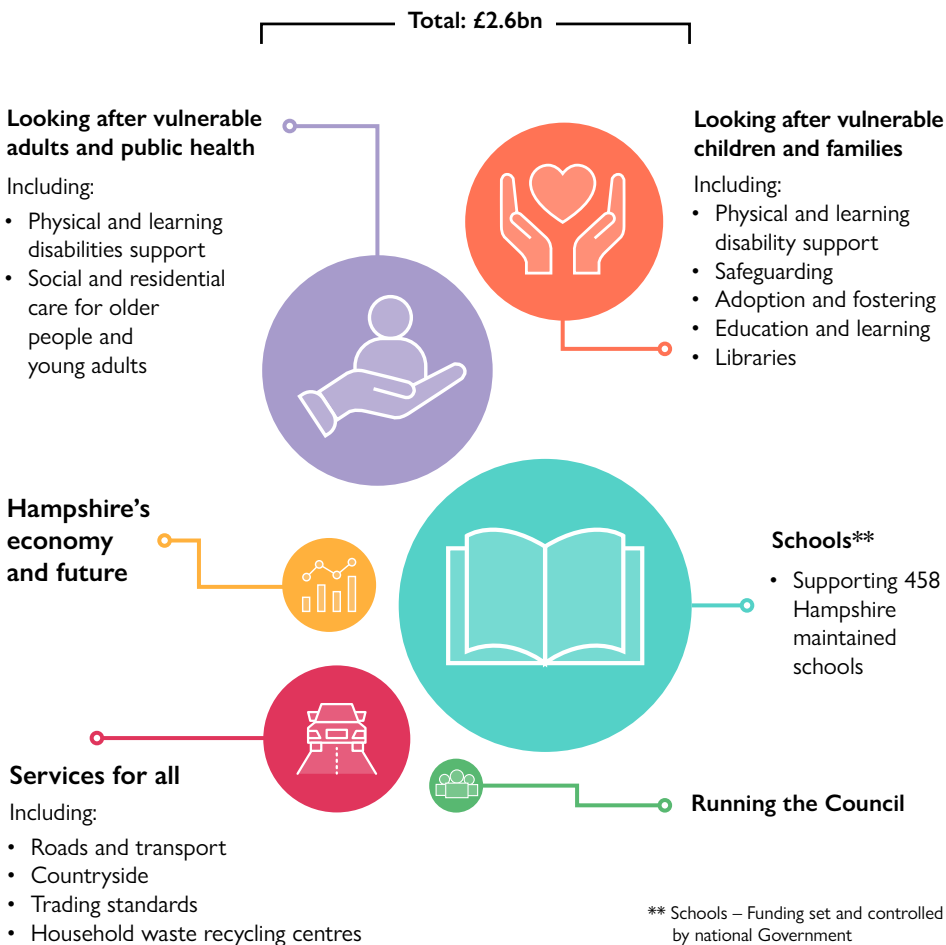
go specifically towards adult social care and supporting the county's higher numbers of older people and adults in the greatest need. The increase will help to generate an extra £39 million towards our overall service delivery costs – in areas like education and learning across hundreds of Hampshire schools, looking after vulnerable children and adults, maintaining over 5,000 miles of roads, libraries, outdoor spaces and award-winning country parks, household waste recycling centres, public health, and trading standards.

On average, this works out as around an extra £1.40 to pay per week – we have considered this increase carefully, knowing that household budgets remain under significant pressure.

Hampshire County Council's council tax is among the lowest of any county council in England and we remain as focused as ever on delivering the best possible value for money for Hampshire's taxpayers.

**Councillor Rob Humby**  
Leader, Hampshire  
County Council

# Hampshire County Council's Council Tax for 2024/25 is around £29.49 per week\*



\*based on a Band D property

# What your Council Tax to Hampshire County Council pays for

Hampshire County Council is the third largest shire council in the country. We are responsible for around 80% of all the money spent on council services in Hampshire, amounting to £2.6 billion of spending over the next 12 months – serving Hampshire residents.

Each year the County Council sets its Council Tax precept to help pay for important local services including roads, social care, education and schools, libraries and household waste recycling, to over 1.4 million residents (excluding people living in the Southampton and Portsmouth unitary council areas).

The Council Tax bill you receive in Hampshire also includes separate portions for your local district, borough or

city council, local policing and the Fire & Rescue Service.

**Hampshire County Council's council tax is among the lowest of any county council in England.**

- For an average Band D property, the Hampshire County Council precept is £1,533.24 from 1 April 2024.
- This is an increase of around £1.40 per week from last year (+4.99%).

A large proportion of the County Council's budget is spent on providing social care, for both older and younger adults as well as children – like protecting children from harm and neglect, social care for Hampshire's growing older population, supporting adults and children with disabilities

and additional needs, as well as school transport for children with special educational needs.

Like other councils across the country, the costs of delivering these social care services are increasing because of inflation and price increases by care

providers, as well as demand being at record levels, especially in social care – pushing up our overall costs by an extra £152 million from April. Therefore 2% of this year’s council tax increase will go towards helping meet these financial pressures in adult social care.

## How much Council Tax will you pay?

The County Council’s council tax for the year beginning 1 April 2024 for properties in each tax band are:

<b>Band</b>	<b>Council tax (£)</b>
Band A	1,022.16
Band B	1,192.52
Band C	1,362.88
Band D	1,533.24
Band E	1,873.96
Band F	2,214.68
Band G	2,555.40
Band H	3,066.48

# This year's spending priorities

In all that we do, we aim to continue to support the most vulnerable residents in Hampshire, whilst building safe, healthy, resilient, and prosperous communities, and protecting the county's rich and diverse natural environment, for everyone, for years to come.





Among our main spending priorities for 2024/25, we will focus on:

## **Protecting vulnerable children**

We're committed to ensuring vulnerable children and families receive the right help at the right time and that children are protected and kept safe from harm, abuse and neglect. Our Children's Services are rated in the highest category by Ofsted and remain one of the strongest nationally, delivering social care support to almost 10,000

children each year, including via crucial fostering and adoption services. With better awareness amongst the public and professionals of how to report abuse, we're receiving more reports of safeguarding concerns from across Hampshire. In 2024, we're supporting families even further to make it quicker and easier for them to access help, and keep more families safely together where possible, so that children can be kept safe and protected.





## Special educational needs

We're supporting around 14,500 Hampshire children and young people every year with special educational needs and/or disabilities to achieve positive outcomes in their education, including providing essential help for their families and respite; equipment and therapies, emotional, wellbeing and healthcare support; as well as transporting pupils to and from school via more than 5.4 million student journeys each year – where costs have increased by £34m in the last year alone. We continue to invest in supporting children with special educational needs and disabilities, including over £6m earmarked for projects specifically to support children with additional needs across seven Hampshire schools by September 2024.





## **Providing adult social care**

In the next five years, the number of people aged 85-89 is set to rise by 14%. With a growing older population and more adults with complex care needs, demand for social care support for Hampshire adults is at record levels. We're providing long term support to over 20,400 people each year, including learning and physical disabilities and mental health. We're one of the only local authorities nationally still

providing in-house dementia and nursing care, but also know just how important it is for people to be able to live independently for longer in good health, in their own home, which is why we support 14,000 people a year to leave hospital and return home safely, deliver over 4 million hours of home care, manage almost 1,000 extra care apartments, and provide state of the art technology to offer a helping hand and peace of mind to individuals needing extra support, and to their families.

## Delivering stronger roads

We're investing an extra £22.5m up to 2025/26 to make Hampshire's 5,500 miles of roads stronger - on top of the £13.5m we already spend annually mending and maintaining Hampshire's highways. Good roads are a priority for us – for people's day-to-day lives, the public's safety and to keep

the local economy thriving, but heavy rain and freezing temperatures each winter take a huge toll on the state of our highways. We've been deploying extra teams to fix potholes and road defects more quickly – mending around a thousand each week – including using new, innovative repair treatments and processes to speed up repairs when they're reported to us.



## **Boosting Hampshire's economy and quality of life**

Hampshire is a great place in which to live, learn, work, play, visit and do business and we want it to remain so. We're helping 'join the dots' to get the right people and plans together to ensure everyone is pulling in the right direction to secure the best possible future for Hampshire – delivering better jobs, skills, and a stronger economy for all, while protecting the natural environment and tackling climate change – to keep Hampshire thriving for generations to come.







## Tackling climate change

We're forging ahead with efforts to meet Hampshire's ambitious climate change targets to be carbon neutral and more resilient to temperature change by 2050. Climate change considerations and measures are part of everything we do and the services we deliver,

plus we're supporting communities to implement their own climate change prevention and resilience plans, including helping people save on bills, protect the environment, and generate green energy via our Solar Together scheme.



# Help with your Council Tax

Contact your district, borough or city council for help with:

- registering for Council Tax
- billing enquiries and payments
- Council Tax discounts and exemptions
- changing address
- appeals (including appeals against banding and / or payment)
- valuation information

